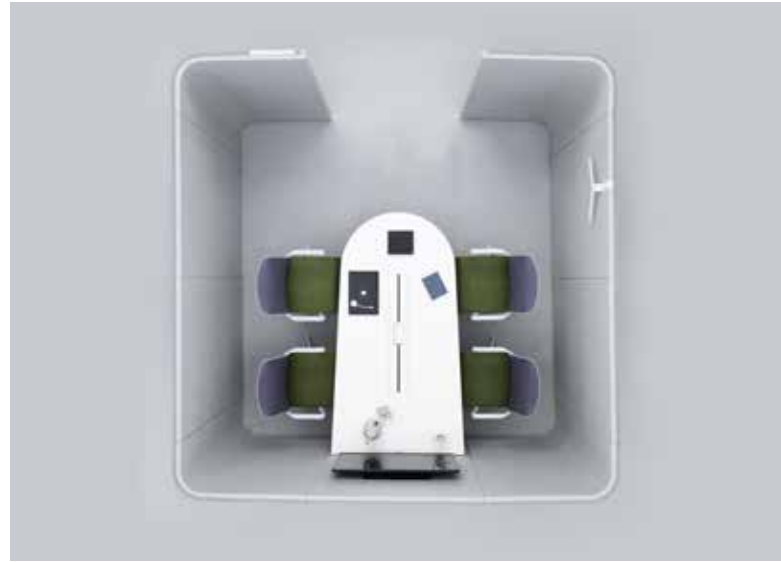


Haven Pods – Team

Design – Allermuir

Team Meeting Pods create informal environments for team meetings where groups of up to ten can meet to talk and share, for the morning briefing, the quick brainstorm or afternoon coffee.



standard & optional features

- Standard feature
- Not available

	HAPDTR18 Team Resource	HAPDTW18 Team Work	HAPDTM18 Team Meeting
Weight	-	-	-
Internal steel frame with multi layered foam construction	●	●	●
Outer vertical panels upholstered in Camira Blazer fabric (two tone is standard)	●	●	●
Quick release panel connector system	●	●	●
Leveling adjusters	●	●	●
Integral under worksurface vertical cable management	□	●	□
Integral seat and backrest	□	□	●

Optional features:

* Two-tone upholstery (use the price for the highest grade of the fabric selected)	-	-	+\$50
Dart accent color (otherwise Dart will match interior fabric)	+\$50	+\$50	+\$50

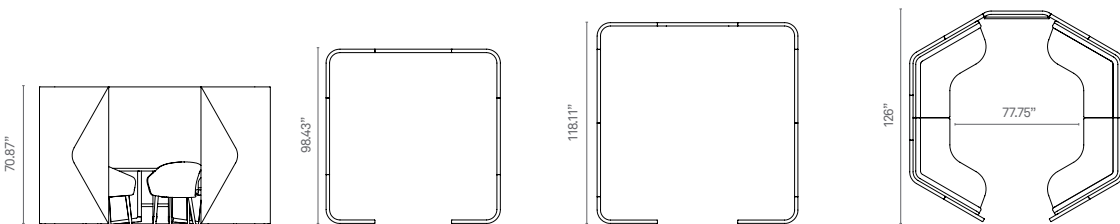
* The integrated seating unit in the Team Meeting Pods are not suitable for Vinyl or Leather upholstery

Accessories

HAPCH Coat Hanger	\$110
HAPNP Name Plate (Available in Black or White)	\$105
HAPWBA2 A2 Magnetic Dry Wipe Board with Hanger, 24" x 18" (Hanger available in Black or White)	\$205
HAPWBA3 A3 Magnetic Dry Wipe Board with Hanger, 18" x 13" (Hanger available in Black or White)	\$190



dimensions— OH - Overall Height OD - Overall Depth OW - Overall Width AH - Arm Height SH - Seat Height SW - Seat Width SD - Seat Depth

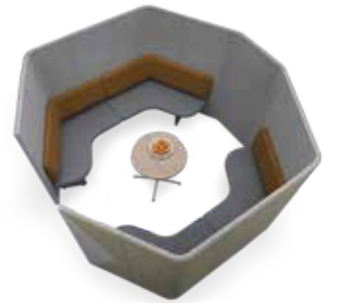


Code	Specification	Plan view	Cost \$
HAPDTR18 • Team Resource	Team workspace, comprising seven upholstered panels		11279
HAPDTW18 • Team Work	Team workspace, comprising seven upholstered panels and one upholstered screen mount panel		14024
HAPDTM18 • Team Meeting	Team meeting space, comprising eleven upholstered panels and one upholstered screen mount panel (see below for seating elements)		17021

Fabric Grade	1	2	3	4	5	6	7	8	9	10	11	C.O.M
HAPDTMU* • Team Meeting bench seat and back elements	4676	4893	5140	5450	5759	6069	6378	6997	8234	9472	10709	4676 12.5 yds

* See Note 4

All prices listed in US \$



to specify your pod...

1. Check the **Standard Features, Finishes** and dimensions and select the version you require.
2. Choose the **Fabric** combination for the panels. Select from fabrics on page 247
3. Select the **Fabric Grade** for the fabric specified for the seat and backrest (where applicable). Refer to main price list for fabric options.
4. N.B. Pods comprise multiple elements; screens, integrated seating (where applicable) each element is individually coded and priced above and must be added together to achieve the configuration as shown.

When ordering, please ensure that you send us all this information, so we can correctly fulfil your requirements.

Haven Pods – Accessories & Extras

Design – Allermuir

Within open plan office environments it is more common today for employees to share resources such as printers and scanners. Aside from the general ambient noise of an office it is generally accepted that it is these kind of devices whirring into life that provide much of the acoustic and visual distraction of colleagues utilising them.



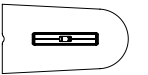
standard & optional features

- Standard feature
- Not available

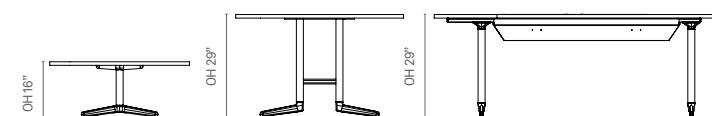
Tables	AL7842TW Ad-Lib Media Table	AL42RDC Ad-Lib round coffee table	AL48RD Ad-Lib round meeting table
1" MFC top	●	●	●
Black EPPC leg column	●	●	●
Black EPPC leg base	●	●	●
Leveling feet	●	●	●
Integrated cable management with flip access on table top in White EPPC	●	□	□
Integrated 4-way monitor control hub with four color coded VGA and audio connections	●	□	□
Integrated power sockets for four laptops with connection lead	●	□	□
Integrated connections for 5th PC with USB connections for mid	●	□	□

Tables

	MFC
AL7842TW • Ad-Lib Media Table (Team Work Pod only) • 29"h x 42"d x 78"w	6345
AL42RDC • Ad-Lib round coffee table (Team Meeting Pod only) • 16"h x 42"Dia.	685
AL48RD • Ad-Lib round meeting table (Team Work Pod only) • 29"h x 48"Dia.	1439



dimensions— OH - Overall Height OD - Overall Depth OW - Overall Width AH - Arm Height SH - Seat Height SW - Seat Width SD - Seat Depth



to specify your table...

1. Think through the configuration of **Table** you require.
2. Select the **Codes** of the individual items you need to achieve your configuration.
3. Choose **Finishes** where appropriate: 'top' finishes / frame color / fabric color.

When ordering, please ensure that you send us all this information, so we can correctly fulfil your requirements.