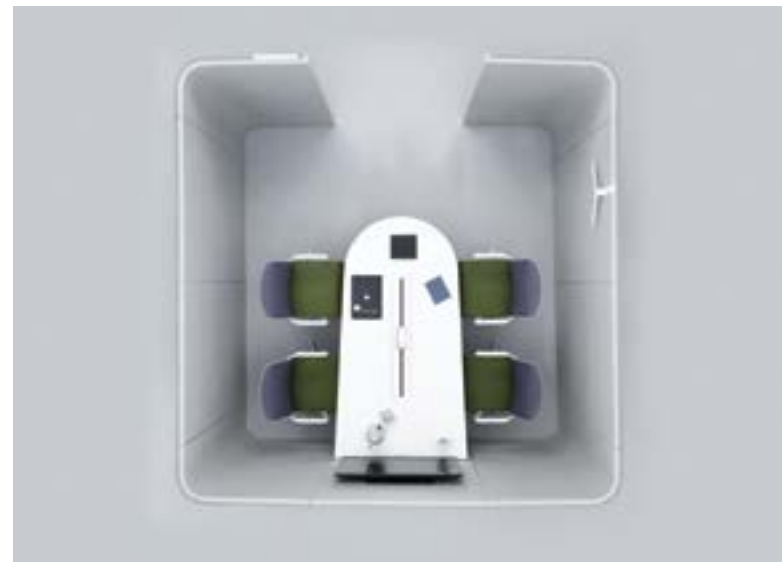


Haven Pods – Team

Design – Allermuir

Team Meeting Pods create informal environments for team meetings where groups of up to ten can meet to talk and share, for the morning briefing, the quick brainstorm or afternoon coffee.



standard & optional features

● Standard feature
 □ Not available



	HAPDTR18 Team Resource	HAPDTW18 Team Work	HAPDTM18 Team Meeting
Weight	□	□	□
Internal steel frame with multi layered foam construction	●	●	●
Outer vertical panels upholstered in Camira Blazer fabric (two-tone is standard)	●	●	●
Quick release panel connector system	●	●	●
Leveling adjusters	●	●	●
Integral under work surface vertical cable management	□	●	□
Integral seat and backrest	□	□	●
Center panel able to support monitor	□	●	□

Optional features:

Dart accent color (otherwise dart will match interior fabric)	+\$50	+\$50	+\$50
Two-tone upholstery on integrated seat units use the price for the highest grade of the fabric selected)	□	□	+\$50

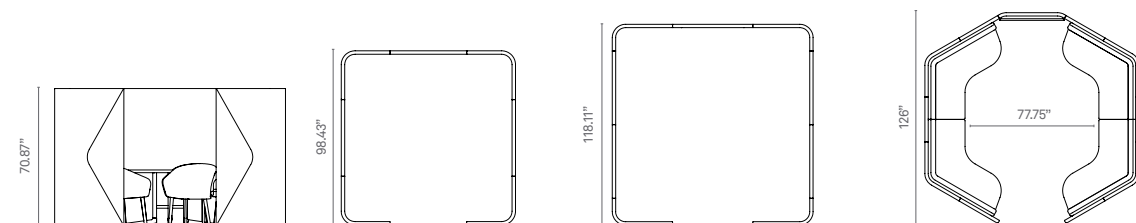
* The integrated seating unit in the Team Meeting Pods are not suitable for Vinyl or Leather upholstery

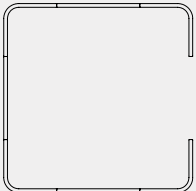
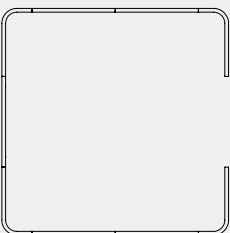
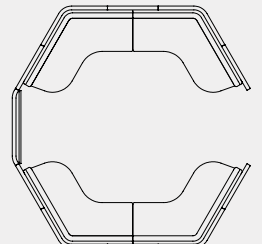
Accessories

HAPCH Coat Hanger	\$110	
HAPNP Name Plate (Available in Black or White)	\$105	
HAPWBA2 A2 Magnetic Dry Wipe Board with Hanger, 24" x 18" (Hanger available in Black or White)	\$205	
HAPWBA3 A3 Magnetic Dry Wipe Board with Hanger, 18" x 13" (Hanger available in Black or White)	\$190	

* Please see page 79 for Camira Blazer Fabrics

dimensions — OH - Overall Height

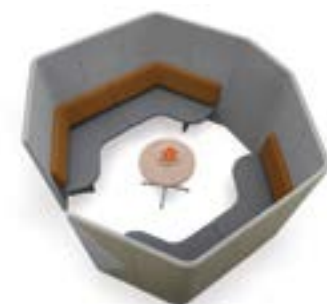


Code	Specification	Plan view	Cost \$
HAPDTR18 • Team Resource	Team workspace, comprising seven upholstered panels.		11730
HAPDTW18 • Team Work	Team workspace, comprising seven upholstered panels and one upholstered screen mount panel.		14585
HAPDTM18 • Team Meeting	Team meeting space, comprising eleven upholstered panels and one upholstered screen mount panel. Panel is suitable for a 42" TV. (see below for seating elements)		17702

Fabric Grade	1	2	3	4	5	6	7	8	9	10	11	C.O.M
HAPDTMU* • Team Meeting bench seat and back elements	4864	5081	5328	5638	5947	6257	6566	7185	8422	9660	10897	4864 12.5 yds

* See Note 4

All prices listed in US \$



to specify your pod...

1. Check the **Standard Features, Finishes** and dimensions and select the version you require.
2. Choose the **Fabric** combination for the panels and the work surface or table top finish.
3. Select the **Fabric grade** for the fabric specified for the seat and backrest (where applicable). Refer to main price list for fabric options.
4. N.B. Pods comprise multiple elements; screens, work surface and integrated seating (where applicable) each element is individually coded and priced above and must be added together to achieve the configuration as shown.

*HAPDTMU Team Meeting Upholstered Seat must be ordered with Team Meeting model

When ordering please ensure that you send us all this information so we can correctly fulfillllllllll your requirements.

Haven Pods – Accessories & Extras

Design – Allermuir

Within open plan office environments it is more common today for employees to share resources such as printers and scanners. Aside from the general ambient noise of an office it is generally accepted that it is these kind of devices whirring into life that provide much of the acoustic and visual distraction of colleagues utilizing them.



standard & optional features

● Standard feature
□ Not available

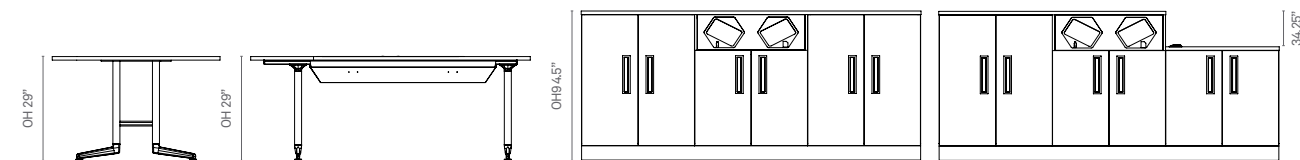
	AL7842TW	AL48RD
	Ad-Lib Media Table	Ad-Lib Round Meeting Table
Weights	□	□
1" TFL top	●	●
Black EPPC leg column	●	●
Black EPPC leg base	●	●
Leveling feet	●	●
Integrated cable management with flip access on table top in White EPPC	●	□
Integrated 4-way monitor control hub with four color coded VGA and audio connections	●	□
Integrated power outlets for four laptops with connection lead	●	□
Integrated connections for 5th PC with USB connections for mid	●	□

* Please see page 87-88 Table Top Finishes

	HAPD7RSC/1	HAPDTRSC/2L	HAPDTRSC/2R
	Team resource recycling storage unit	Team resource recycling storage unit split height	Team resource recycling storage unit split height
Weights	□	□	□
1" TFL top panel	●	●	●
TFL carcass	●	●	●
Integrated shelves	●	●	●
Recycle compartment with integrated bins	●	●	●
Integral locking	●	●	●

* Please see page 87-88 Table Top Finishes

dimensions – OH - Overall Height



Tables

	TFL	A
AL7842TW • Ad-Lib Media Table (Team Work Pod only) • 29"h x 42"d x 78"w	6345	
ALP48RD • Ad-Lib round meeting table (Team Work Pod only) • 29"h x 48"Dia.	1439	

Storage

	TFL	A
HAPDTRSC/1 Team resource Recycling storage unit 94.5" x 25.25" x 42.25" high	3485	
HAPDTRSC/2L Team resource Recycling storage unit split height 94.5" x 25.25" x 42.25" / 34.25" high	4036	
HAPDTRSC/2R Team resource Recycling storage unit split height 94.5" x 25.25" x 42.25" / 34.25" high	4036	

to specify your table...

1. Think through the configuration of the **Table** you require
2. Select the **Codes** of the individual items you need to achieve your configuration
3. Choose **Finishes** where appropriate: 'top' finishes / frame color / fabric color

When ordering please ensure that you send us all this information so we can correctly fulfill your requirements.