

Allermuir

Folk

[allermuir.com](http://allermuir.com)

# Folk

Design – PearsonLloyd

Folk is both timeless in its seemingly familiar design, and timely in its modest and ingenious flexibility. A range of wood, plastic and Aluminum finishes, different colors and upholstery options allow you to change Folk’s flavor so that it can appear like a range of different chairs that somehow sit together harmoniously in one space.



## standard & optional features

- Standard feature
- Not available

	FLK100U3 Side chair Upholstered seat & back	FLK101 Side chair Wood seat & back	FLK101U1 Side chair Upholstered seat & wood back
Stacks	4	4	4
Beech ply seat with a clear finish*	□	●	□
Beech ply back with a clear finish*	□	●	●
Upholstered seat	●	□	●
Upholstered back	●	□	□
Cast Aluminum frame finished in Off-Black powder coat*	●	●	●
Solid Beech legs with a clear finish*	●	●	●
Plastic glides	●	●	●

Optional features:

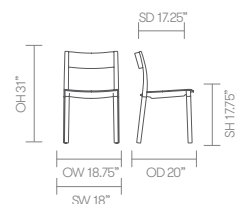
Cast Aluminum frame available in Matte White, Crayon Gray, Pistachio, Aubergine or Seattle Green powder coat*	+ \$0	+ \$0	+ \$0
Beech ply seat, back, and solid Beech legs available in Off-Black, White, Crayon Gray, Pistachio, Aubergine and Seattle Green Color wash or stained*	-	+ \$72	-
Beech ply back, and solid Beech legs available in Off-Black, White, Crayon Gray, Pistachio, Aubergine and Seattle Green Color wash or stained*	-	-	+ \$60
Solid Beech legs available in Off-Black, White, Crayon Gray, Pistachio, Aubergine and Seattle Green Color wash or stained*	+ \$48	+ \$48	+ \$48
Oak ply seat, back and solid Oak legs with a clear finish*	-	+ \$108	-
Oak ply back and solid Oak legs with a clear finish*	-	-	+ \$90
Oak ply back with a clear finish*	-	-	+ \$36
Solid Oak legs with a clear finish*	+ \$72	-	-
Plastic glides with felt	+ \$25	+ \$25	+ \$25
Two-tone upholstery (use the price of the highest band of the fabrics selected)	+ \$50	-	-

\* Click here to see available Wood Folk Finishes

\* Click here to see a full range of Folk tables

Ships KD = Knock Down (Needs assembly)

## dimensions – OH - Overall Height OD - Overall Depth OW - Overall Width AH - Arm Height SH - Seat Height SW - Seat Width SD - Seat Depth



Fabric Grade		C.O.M.		C.O.L.										A	B
		1	2	3	4	5	6	7	8	9	10	11			
<b>FLK100U3</b> • Side chair • Upholstered seat & back	-	1,020	1,044	1,071	1,105	1,139	1,173	1,207	1,275	1,411	1,570	1,729	1,275	1,570	
	1.5 yds														
<b>FLK101</b> • Side chair • Wood seat & back	844	-	-	-	-	-	-	-	-	-	-	-	-	-	
<b>FLK101U1</b> • Side chair • Upholstered seat & wood back	-	955	968	981	998	1,015	1,032	1,049	1,083	1,152	1,231	1,310	1,083	1,231	
	1 yds														

A, B = Leather

All prices listed in US \$

COM = Customers own Material (yds)

COL = Customers own Leather (sq ft.)

Note 1: We cannot offer the FLK100U3 in the following fabric ranges:

Camira – Craggan Flax, Kvadrat – Hallingdal 65



# Folk

Design – PearsonLloyd

Folk is both timeless in its seemingly familiar design, and timely in its modest and ingenious flexibility. A range of wood, plastic and Aluminum finishes, different colors and upholstery options allow you to change Folk’s flavor so that it can appear like a range of different chairs that somehow sit together harmoniously in one space.



## standard & optional features

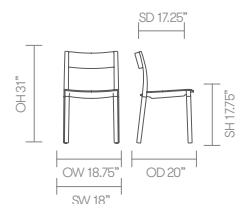
- Standard feature
- Not available

	FLK103 Side chair Plastic seat & back	FLK103U1 Side chair Upholstered seat & plastic back
Stacks	4	4
Upholstered seat	□	●
Upholstered back	●	□
Plastic seat — Color: Off-Black*	●	●
Plastic back — Color: Off-Black*	●	●
Cast Aluminum frame finished in Off-Black powder coat*	●	●
Solid Beech legs with a clear finish*	●	●
Plastic glides	●	●
Optional features:		
Cast Aluminum frame available in Matte White, Crayon Gray, Pistachio, Aubergine or Seattle Green powder coat*	+ \$0	+ \$0
Plastic seat and back available in White, Crayon Gray, Pistachio, Aubergine or Seattle Green*	+ \$0	-
Plastic back available in White, Crayon Gray, Pistachio, Aubergine or Seattle Green*	-	+ \$0
Solid Beech legs available in Off-Black, White, Crayon Gray, Pistachio, Aubergine, or Seattle Green*	+ \$48	+ \$48
Solid Oak legs with a clear finish*	+ \$72	+ \$72
Plastic glides with felt	+ \$25	+ \$25

\* Click here to see available Wood Folk Finishes

Ships KD = Knock Down (Needs assembly)

## dimensions — OH - Overall Height OD - Overall Depth OW - Overall Width AH - Arm Height SH - Seat Height SW - Seat Width SD - Seat Depth



Fabric Grade		C.O.M.		C.O.L.											
		1	2	3	4	5	6	7	8	9	10	11	A	B	
<b>FLK103</b> • Side chair • Plastic seat & back	675	-	-	-	-	-	-	-	-	-	-	-	-	-	-
<b>FLK103U1</b> • Side chair • Upholstered seat & plastic back	-	887 1 yds	900	913	930	947	964	981	1,015	1,084	1,163	1,242	1,015	1,163	

A, B = Leather

COM = Customers own Material (yds)

COL = Customers own Leather (sq ft.)

All prices listed in US \$



# Folk

Design – PearsonLloyd

Folk is both timeless in its seemingly familiar design, and timely in its modest and ingenious flexibility. A range of wood, plastic and Aluminum finishes, different colors and upholstery options allow you to change Folk’s flavor so that it can appear like a range of different chairs that somehow sit together harmoniously in one space.



## standard & optional features

- Standard feature
- Not available

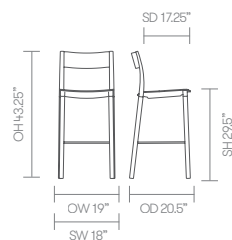
	FLK300U3 High stool Upholstered seat & back	FLK301 High stool Wood seat & back	FLK301U1 High stool Upholstered seat & wood back
<b>Stacks</b>	□	□	□
Beech ply seat with a clear finish*	□	●	□
Beech ply back with a clear finish*	□	●	●
Upholstered seat	●	□	●
Upholstered back	●	□	□
Cast Aluminum frame finished in Off-Black powder coat*	●	●	●
Solid Beech legs with a clear finish*	●	●	●
Plastic glides	●	●	●
Footrest finished in Off-Black powder coat*	●	●	●
Footrest protector	●	●	●
<b>Optional features:</b>			
Counter height stool option, seat height 24.5" (add CH to product code)	+ \$0	+ \$0	+ \$0
Cast Aluminum frame available in Matte White, Crayon Gray, Pistachio, Aubergine or Seattle Green powder coat*	+ \$0	+ \$0	+ \$0
Beech ply seat, back, and solid Beech legs available in Off-Black, White, Crayon Gray, Pistachio, Aubergine and Seattle Green Color wash or stained*	-	+ \$96	-
Beech ply back and solid Beech legs available in Off-Black, White, Crayon Gray, Pistachio, Aubergine and Seattle Green Color wash or stained*	-	-	+ \$84
Solid Beech legs available in Off-Black, White, Crayon Gray, Pistachio, Aubergine and Seattle Green Color wash or stained*	+ \$72	+ \$72	+ \$72
Oak ply seat, back and solid Oak legs with a clear finish*	-	+ \$130	-
Oak ply back and solid Oak legs with a clear finish*	-	-	+ \$102
Solid Oak legs with a clear finish*	+ \$84	-	-
Plastic glides with felt	+ \$25	+ \$25	+ \$25
Two-tone upholstery (use the price of the highest band of the fabrics selected)	+ \$50	-	-

\* Click here to see available Wood Folk Finishes

\* Click here to see a full range of Folk tables

Ships KD = Knock Down (Needs assembly)

## dimensions – OH - Overall Height OD - Overall Depth OW - Overall Width AH - Arm Height SH - Seat Height SW - Seat Width SD - Seat Depth



Fabric Grade		C.O.M.		C.O.L.										
		1	2	3	4	5	6	7	8	9	10	11	A	B
<b>FLK300U3</b> • High stool • Upholstered seat & back	- 1.5 yds	1,393	1,417	1,444	1,478	1,512	1,546	1,580	1,648	1,784	1,943	2,102	1,648	1,943
<b>FLK301</b> • High stool • Wood seat & back	1,103	-	-	-	-	-	-	-	-	-	-	-	-	-
<b>FLK301U1</b> • High stool • Upholstered seat & wood back	- 1 yds	1,334	1,347	1,360	1,377	1,394	1,411	1,428	1,462	1,531	1,610	1,689	1,462	1,610

A, B = Leather

All prices listed in US \$

COM = Customers own Material (yds)

COL = Customers own Leather (sq ft)

Note 1: We cannot offer the FLK300U3 in the following fabric ranges:

Camira – Craggan Flax, Kvadrat – Hallingdal 65



# Folk

Design – PearsonLloyd

Folk is both timeless in its seemingly familiar design, and timely in its modest and ingenious flexibility. A range of wood, plastic and Aluminum finishes, different colors and upholstery options allow you to change Folk’s flavor so that it can appear like a range of different chairs that somehow sit together harmoniously in one space.



Fabric Grade		C.O.M.		C.O.L.								A	B	
		1	2	3	4	5	6	7	8	9	10			11
<b>FLK303</b> • High stool • Plastic seat & back	933	-	-	-	-	-	-	-	-	-	-	-	-	-
<b>FLK303U1</b> • High stool • Upholstered seat & plastic back	-	1,315 1 yds	1,328	1,341	1,358	1,375	1,392	1,409	1,443	1,512	1,591	1,670	1,443	1,591



A, B = Leather

COM = Customers own Material (yds)

COL = Customers own Leather (sq ft.)

All prices listed in US \$

## standard & optional features

- Standard feature
- Not available

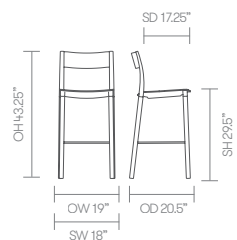
	<b>FLK303</b> High stool Plastic seat & back	<b>FLK303U1</b> High stool Upholstered seat & plastic back
Stacks	□	□
Upholstered seat	□	●
Plastic seat — Color: Off-Black*	●	□
Plastic back — Color: Off-Black*	●	●
Cast Aluminum frame finished in Off-Black powder coat*	●	●
Solid Beech legs with a clear finish*	●	●
Plastic glides	●	●
Footrest finished in Off-Black powder coat*	●	●
Footrest protector	●	●
Optional features:		
Counter height stool option, seat height 24.5" (add CH to product code)	+ \$0	+ \$0
Cast Aluminum frame available in Matte White, Crayon Gray, Pistachio, Aubergine or Seattle Green powder coat*	+ \$0	+ \$0
Plastic seat and back available in White, Crayon Gray, Pistachio, Aubergine, or Seattle Green	+ \$0	-
Plastic back available in White, Crayon Gray, Pistachio, Aubergine, or Seattle Green	-	+ \$0
Solid Beech legs available in Off-Black, White, Crayon Gray, Pistachio, Aubergine and Seattle Green colorwash or stained	+ \$72	+ \$72
Solid Oak legs with a clear finish*	+ \$84	+ \$84
Plastic glides with felt	+ \$25	+ \$25

\* Click here to see available Wood Folk Finishes

\* Click here to see available Plastic Folk Finishes

Ships KD = Knock Down (Needs assembly)

## dimensions — OH - Overall Height OD - Overall Depth OW - Overall Width AH - Arm Height SH - Seat Height SW - Seat Width SD - Seat Depth



# Folk

---

## Plastic Finishes



Aubergine



Crayon Gray



Off Black



Pistachio



Seattle Green



White

---

## Standard Wood Finishes



Clear Beech



Clear Oak

---

## Color Washes



Aubergine Wash



Crayon Gray Wash



Off Black Wash



Pistachio Wash



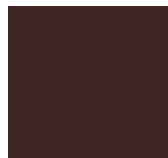
Seattle Green Wash



White Wash

---

## Metal Leg Finishes



Aubergine powder coat



Crayon Gray powder coat



Off Black powder coat



Pistachio powder coat



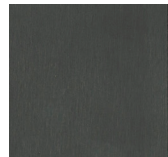
Seattle Green powder coat



Matte White powder coat

---

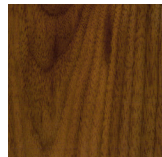
## Wood Stains Based on Beech



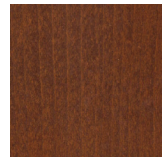
Wenge



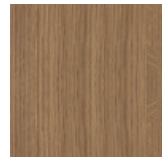
Dark Walnut



American Walnut



American Cherry



White Oak